

PRIMERGY Econel 100

System configurator and order-information guide

April 2008

Contents

- Instructions
- Configuration diagram
- Configurator
 - 0 System software
 - I Basic unit
 - II Processor
 - III Memory
 - IV Graphics
 - V Accessible drives
 - VI SCSI Controller
 - VII Disk array, Hard disk drives
 - VIII Communication/Network
 - IX Miscellaneous
 - X Country specific power cords
- Change report



PRIMERGY Server

Instructions

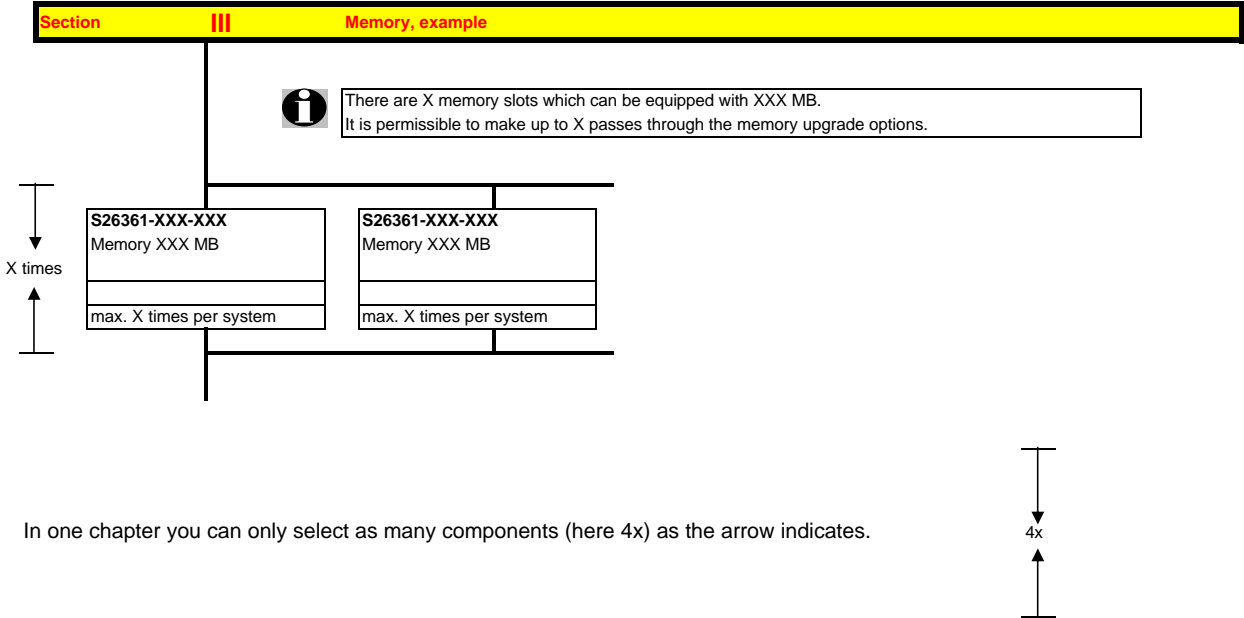
This document contains basic product and configuration information that will enable you to configure your system via PC-/ System-Architect.

Only these tools will ensure a fast and proper configuration of your PRIMERGY server or your complete PRIMERGY Rack system.

You can configure your individual PRIMERGY server in order to adjust your specific requirements.

The System configurator is divided into several chapters that are identical to the current price list and PC-/ System-Architect

Please follow the lines. If there is a junction, you can choose which way or component you would like to take. Go through the configurator by following the lines from the top to the bottom.



In one chapter you can only select as many components (here 4x) as the arrow indicates.

Please note that there are information symbols which indicate necessary information.



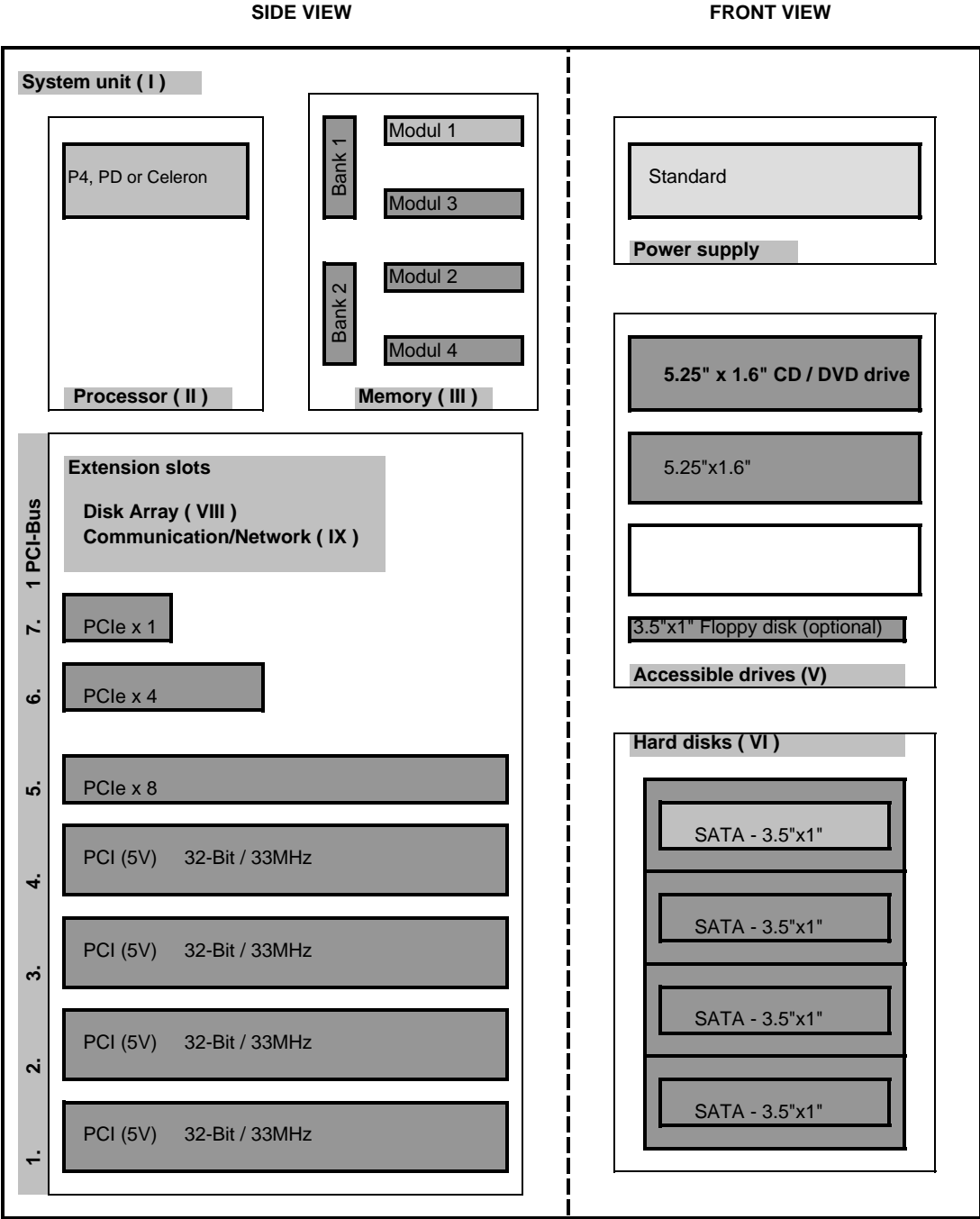
Further information in the internet see:

<http://www.primergy.com> (internet)

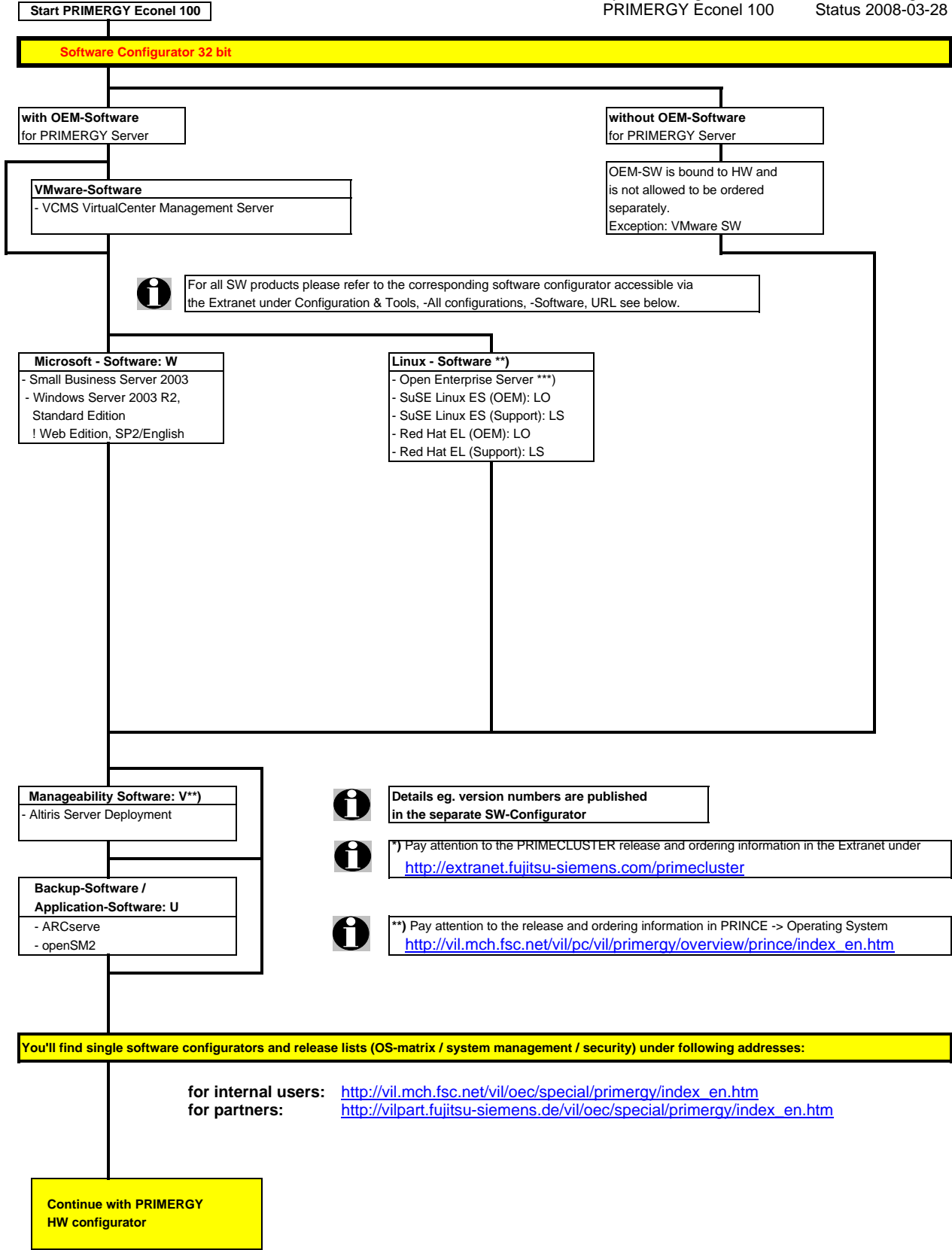
<http://extranet.fujitsu-siemens.com/primergy> (extranet)

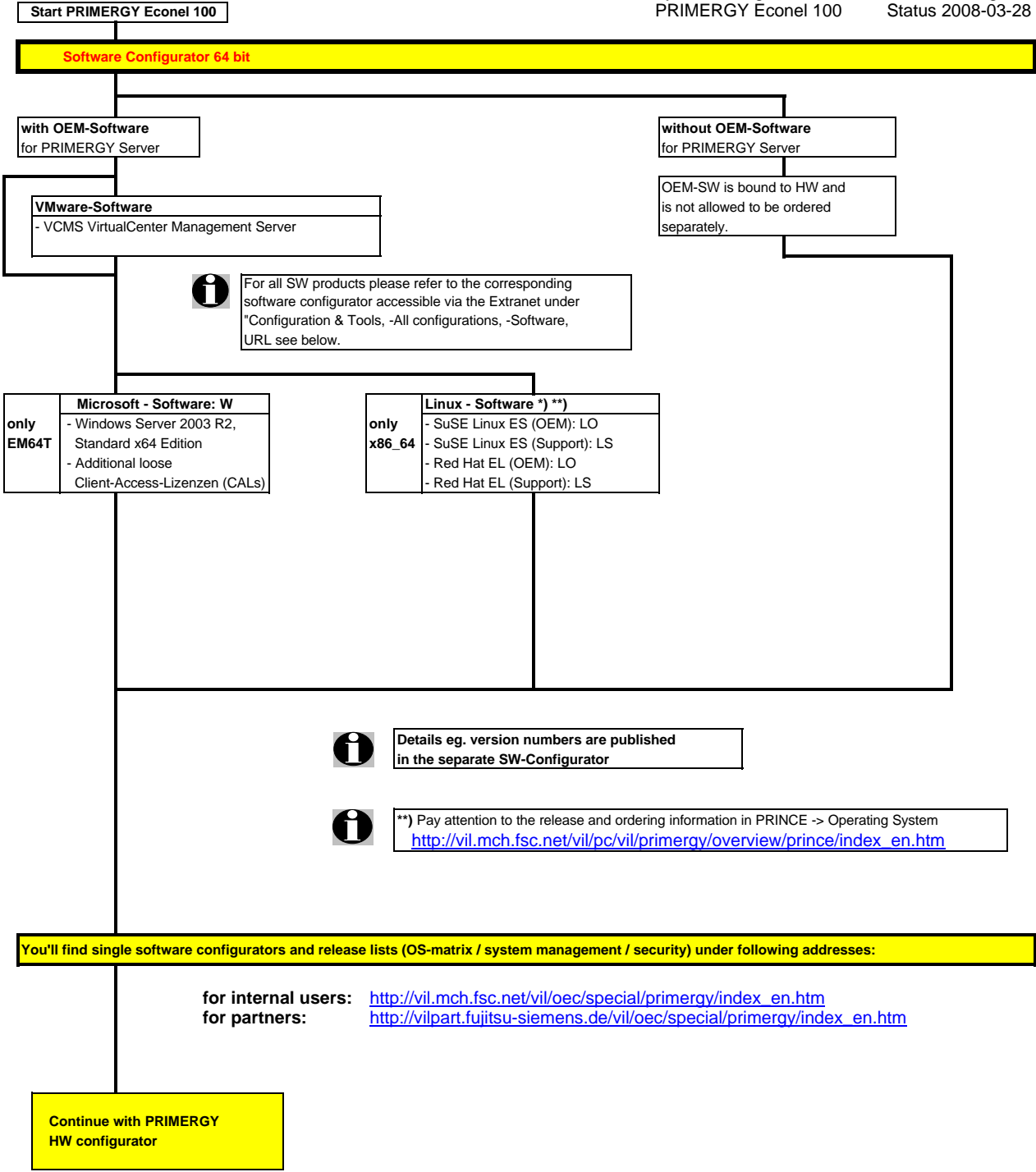
Prices and availability see price list and PC-/ System-Architect
Subject to change and errors excepted

Configuration diagram PRIMERGY Econel 100



Key:
 [Light Gray Box] Included in basic unit
 [Dark Gray Box] Option





Section | Basic unit



System unit consisting of:

* Housing including standard power supply (no redundancy)

Systemboard with:

* 7 PCI expansion slots:

- 1x PCIe x 8
- 1x PCIe x 4
- 1x PCIe x 1
- 2x short / 2x long 32Bit / 33MHz (5V)

* 4 memory slots for up to 8GB (PC4200) registered DDR II RAM (ECC), max. 2GB modul per slot

* 1 bay 3,5" (occupied by 1 floppy disk 3.5"/ 1.44MB) -optional-

* 2 bays 5.25" for accessible drives

* 4 bays 1" (for no hot plug SATA HD)

* SATA with up to 4 HDD's over ICH-7R (Chipset)

* ATI Range XL 8MB

* Intel Broadcom 10/100/1000 Mb/s (5751) on-board

* 1 x Fast-IDE (ATA) Controller on-board (2 x ATA-100)

Cables:

1. IDE Kabel for CD/DVD
2. 4 x SATA cabel in basic unit

PS/2 mouse

ServerView Suite Software package incl. ServerStart, ServerBooks, Management Software and Updates

External Interfaces:

- 1x RS-232-C (serial, 9 pins)
- 1x Centronics (parallel, 25 pins, EPP/ECP compatible)
- 1x keyboard (PS/2)
- 1x mouse (PS/2)
- 1x VGA (15 pins)
- 8x USB 2.0 (2x frontside, 4x on rearside, 2x released internal USB Interfaces for backup devices)
- 1x LAN RJ45

Cables included in basic unit

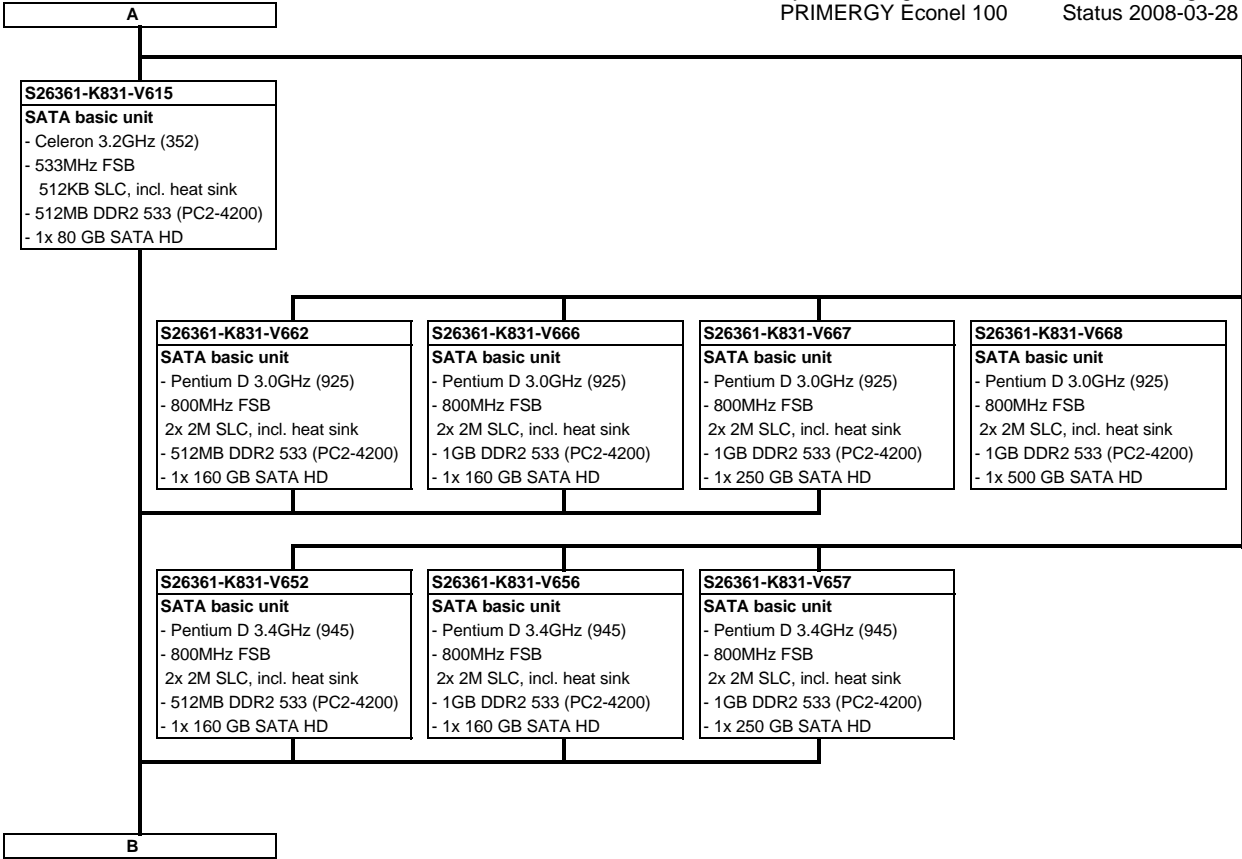
Connections	Cable	PRIMERGY Econel 100
1. IDE CD/DVD		
3. 1 x 4 SATA Festplatten		Promise

Key:

○ IDE


⊗ SATA

A




B

Section II Processor


 In basic unit including!

Section III Memory

 There are 2 memory banks with 2 DIMM slots each.
Single channel memory configuration allow maximum flexibility:
 Additional memory can be configured as single memory modules.
Dual channel memory configurations for maximum performance:
 For optimum performance memory has to be configured in pairs of memory modules with identical size.

S26361-F3000-E513 Main memory 512MB DDR2 533/PC2-4200 unbuffered consisting of one module occupies one bank max. 3x per system	S26361-F3000-E514 Main memory 1GB DDR2 533/PC2-4200 unbuffered consisting of one module occupies one bank max. 3x per system	S26361-F3000-E515 Main memory 2GB DDR2 533/PC2-4200 unbuffered consisting of one module occupies one bank max. 3x per system
--	--	--

Section IV Graphics

 ATI Range XL (8MB)

C

C

Section V Accessible drives

i There are 4 drive bays (3x 5,25"/1x 3,5") for accessible drives.

i Setup Econel 100 by **ServerStart** is supported with following configurations:
no DVD, no CD:
 remote installation only (PXE service & DHCP server required)
built in CD/DVD:
 UNC Network share reachable or USB Floppy or MemoryBird connected

i If installation is done locally, make sure you have internal or external FDD available for driver installation.

S26361-F2575-E1
 Floppy disk drive 1"
 Connector: 26pin
 incl. description (Ger/US)
 1" * 3.5", anthracite bezel
 max. 1x per system

Following USB Components are available

1) USB DVD+-RW: Super Multi DVD slim drive	S26391-F7119-L100 (USB cable included)
2) FDD USB (external): external USB FDD	S26391-F264-L226 (USB cable included)
3) USB Keyboard: KBPC PX D, professional keyboard	S26381-K340-V120
4) USB Mouse: Optical Wheel Mouse Tilt USB/PS2	S26381-K415-L100
5) USB Memorybird: Memorybird 2GB	S26391-F6047-L102
Memorybird 4GB	S26391-F6047-L104

1x
SNP:SY-F2234E1-A
 DVD-ROM ATAPI
 incl. description (Ger/US)
 1.6 x 5.25", anthracite bezel
 max. 1x per system

S26361-F3148-E1
 DVD-RW 16x super multi drive
 all formats, DUAL/DL, DVD-RAM
 only W2K, W3K and Linux
 1.6 x 5.25", anthracite bezel
 max. 1x per system

S26361-F2849-E3
 Tape drive VXA-2
 80GB, 6MB/s, U2W SCSI
 Connector: HD68
 without cable
 incl. description (Ger/US)
 data and cleaning cartridge
 1.6 x 5.25", anthracite bezel
 max. 1x per system

S26361-F3224-E3
 Tape drive VXA-320
 160GB, 12MB/s, U160 SCSI
 Connector: HD68
 without cable
 incl. description (Ger/US)
 data and cleaning cartridge
 1.6 * 5.25", anthracite bezel
 max. 1x per system

S26361-F3460-E3
 Tape drive Entry LTO Ultrium
 100GB, 16MB/s, U160 SCSI
 Connector: HD68
 without cable
 incl. description (Ger/US)
 data and cleaning cartridge
 1.6 * 5.25", anthracite bezel
 max. 1x per system

i SCSI Controller is needed for Backup Drives with SCSI interface.

1x
S26361-F2848-E3
 Tape drive DDS Gen5
S26361-F2848-E31 (only for OBDR)
 DDS-G5 for One button dis. recov.
 36GB, 3MB/s, U2W SCSI
 Connector: HD68
 without cable
 incl. description (Ger/US)
 data and cleaning cartridge
 1.6 x 5.25", anthracite bezel
 max. 1x per system

as soon as available
S26361-F3225-E3
 Tape drive DDS Gen6
 80GB, 6MB/s, U160 SCSI
 Connector: HD68
 without cable
 incl. description (Ger/US)
 data and cleaning cartridge
 1.6 * 5.25", anthracite bezel
 max. 1x per system

i RHEL4 U1 (X86/EM64T): No backup possible with DDS Gen5 Seagate (Certance), FW A050, connected at D1305

S26361-F3324-E3
 Tape drive DDS Gen5 USB 5.25"
 36GB, 3MB/s, USB 2.0
 Connector: USB "B"
 with USB cable kit
 incl. description (Ger/US)
 data and cleaning cartridge
 1.6 * 5.25", anthracite bezel
 max. 1x per system

S26361-F3857-E1
 RDX drive USB 5.25" internal
 80-160GB, 25MB/s, USB 2.0
 Connector: USB "B"
 with USB cable
 incl. description (Ger/US)
 without RDX cartridges
 1.6 * 5.25", anthracite bezel
 max. 1x per system

i RDX cartridges must be ordered separately
 RDX 80GB = S26361-F3857-L80
 RDX 120GB = S26361-F3857-L120
 RDX 160GB = S26361-F3857-L160 (later)

D

D

Section VI SCSI-Controller

SCSI Controller for internal backup drives

S26361-F2644-E3
SCSI Controller UW
with LSI Chip 53C1000R
1 channel LVD, for internal backup drive
max. 160MB/s; with cable
64/66 PCI, min 166mm, PCI standard profile
int: HD68 LVD, ext:
SW:
max. 1x per system

Section VII Disk Array, Hard disk drives



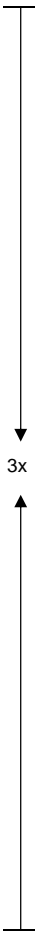
One hard disk drive is in the basic unit included

S26361-F3219-E80
Hard disk 80GB
7.200 rpm, <9,0 ms, 8MB Cache
SATA (3 GB/s)
no hot plug
occupies 1" bay
max. 3x per system

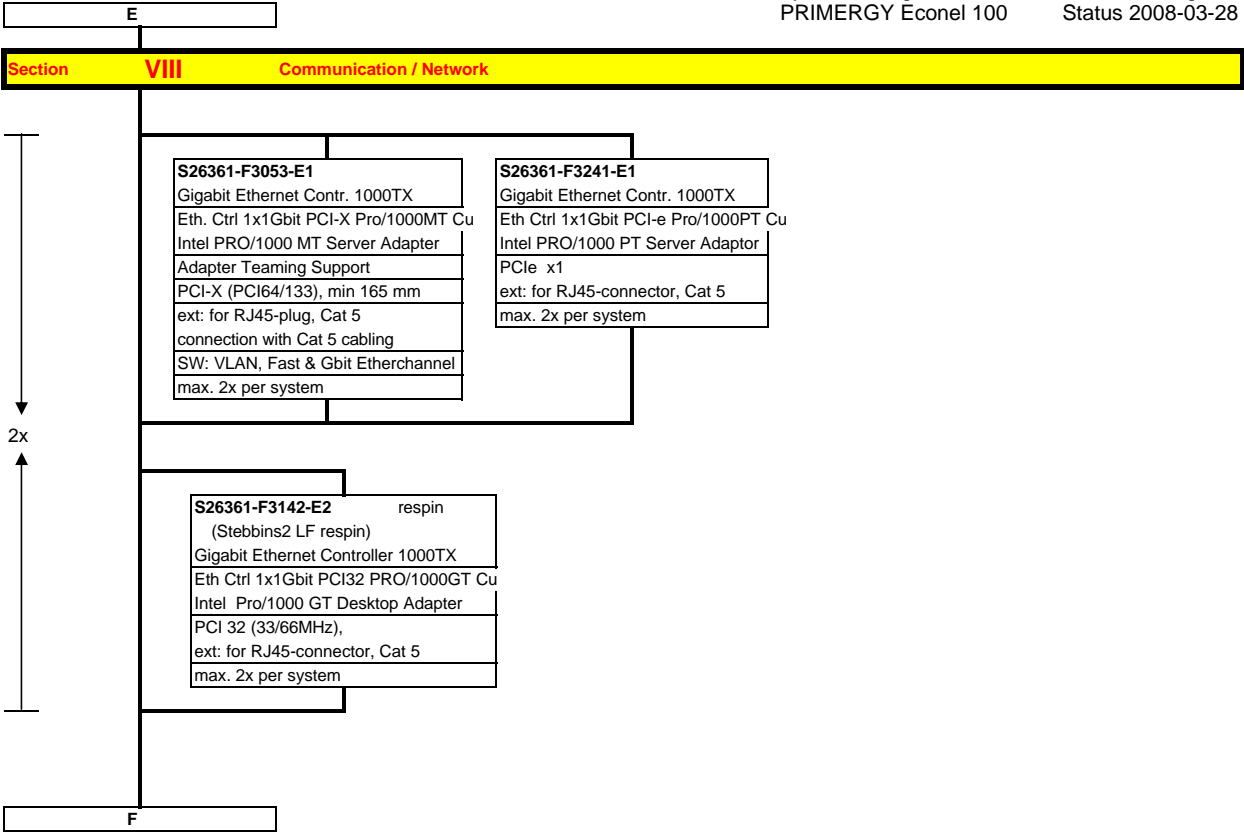
S26361-F3219-E160
Hard disk 160GB
7.200 rpm, <9,0 ms, 8MB Cache
SATA (3 GB/s)
no hot plug
occupies 1" bay
max. 3x per system

S26361-F3219-E250
Hard disk 250GB
7.200 rpm, <9,0 ms, 8MB Cache
SATA (3 GB/s)
no hot plug
occupies 1" bay
max. 3x per system

S26361-F3219-E500
Hard disk 500GB
7.200 rpm, <9,0 ms, 8MB Cache
SATA (3 GB/s)
no hot plug
occupies 1" bay
max. 3x per system



E



F

Section IX Miscellaneous

Section X Country specific power cords

Power cord for floorstand versions for following countries:
1,8 m, grey

T26139-Y1740-E10	D, A, B, F, NL, FIN, N, S, E, P, RUS, TR
T26139-Y1742-E10	USA, Canada
T26139-Y1743-E10	Switzerland
T26139-Y1744-E10	UK, IR
T26139-Y1745-E10	Italy
T26139-Y1746-E10	Denmark
T26139-Y3850-E10	Option "no powercord", for Countries without specific cable orderable like e.g. China

Keyboards for following countries:

S26381-K297-E110	USA / international
S26381-K297-E120	Germany
S26381-K297-E140	France
S26381-K297-E155	Sweden / Finland
S26381-K297-E165	United Kingdom
S26381-K297-E180	Spain
S26381-K297-E185	Italy



Options and other peripherals
For other options, refer to SystemArchitect and Pricelist.
These options are supplied lose with the shipment.
For suitable peripherals for this product, please refer to SystemArcitect.

End PRIMERGY Econel 100

